



Road Fatalities in the Northern Territory for the Period 01 January to 31 August 2002 Status Report

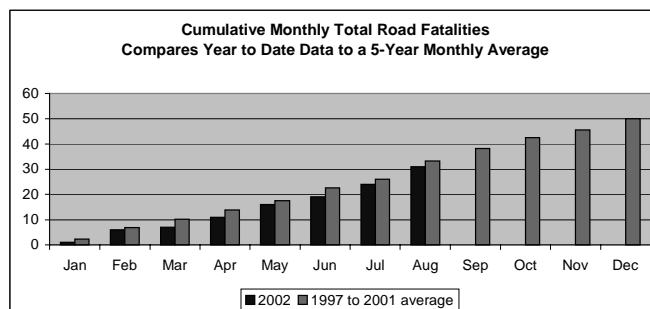
There were 31 road fatalities in the Northern Territory from 01 January to 31 August 2002 compared to 30 at the same time in 2001. The 31 deaths were a result of 24 fatal crashes compared to 26 for the same time in 2001.

Road Fatalities: -

Year	NT	NT Per 100,000 Population	Australia Per 100,000 Population
2001	50	25.3	9.06
2000	51	26.2	9.49
1999	49	25.4	9.28

24 fatal crashes:

- ◆ 6 occurred where the car ran off the road without colliding into something first.
- ◆ 8 resulted from a pedestrian struck by vehicle.
- ◆ 1 resulted from a "sideswipe".
- ◆ 2 resulted from an animal struck by a vehicle.
- ◆ 4 resulted from a single vehicle roll over.
- ◆ 1 resulted from a head on collision.
- ◆ 2 resulted from an angle collision.



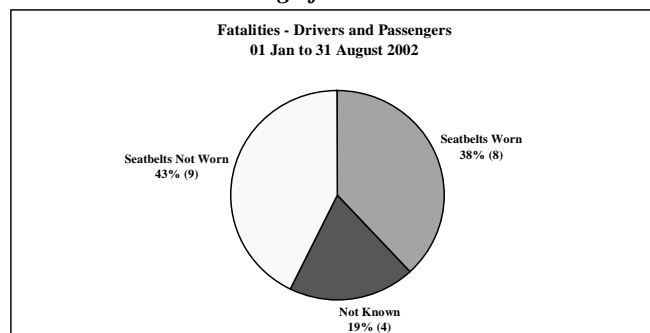
24 fatal crashes:

- ◆ 18 occurred in rural areas and 6 in urban areas.
- ◆ 23 occurred on sealed-dry roads and 1 on unsealed-dry road.

31 fatalities:

- ◆ 22 were male and 9 were female.
- ◆ 22 were NT residents (13 Aboriginals & 9 were non-Aboriginals), 3 were interstate visitors and 6 overseas visitors.

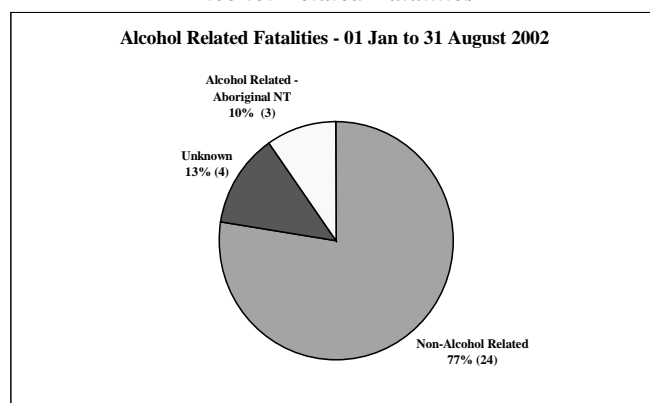
Non-Wearing of Seatbelt Fatalities



Of the 13 Aboriginal NT resident fatalities:

- ◆ 2 drivers – 1 did not wear a seatbelt and 1 unknown.
- ◆ 5 passengers - 4 were not wearing a seatbelt and 1 unknown.
- ◆ 6 pedestrians.

Alcohol Related Fatalities



Of the 9 non-Aboriginal NT resident fatalities:

- ◆ 3 drivers – 2 were wearing a seatbelt and 1 unknown
- ◆ 4 passengers – 1 was wearing a seatbelt, 2 did not and 1 unknown.
- ◆ 2 motorcyclists.

Of the 3 interstate visitor fatalities:

- ◆ 1 passenger - was wearing a seatbelt.
- ◆ 2 pedestrians.

Of the 6 overseas visitor fatalities:

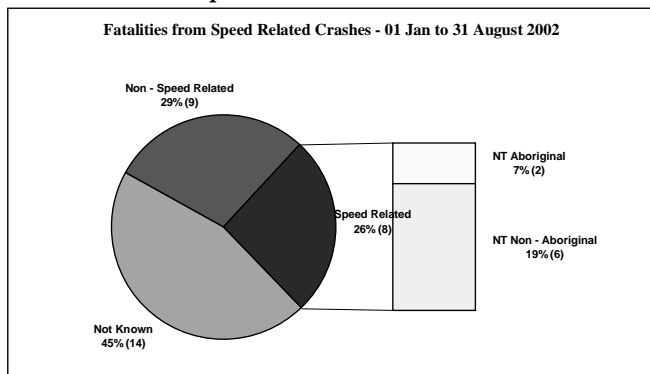
- ◆ 2 drivers - 1 was wearing a seatbelt and 1 did not.
- ◆ 4 passengers - 3 were wearing a seatbelt and 1 did not.





Road Fatalities in the Northern Territory for the Period 01 January to 31 August 2002 Status Report

Speed Related Fatalities



Vehicle Crashes Involving Heavy Vehicles:

Heavy Vehicles Involved Crashes 01 Jan to 31 August 2002	Driver Not Wearing Seatbelt	Driver BAC > 0	Speed Related	Fatigue Related
Fatal	0	0	0	0
Serious Injury	0	0	0	0
Minor Injury	0	0	0	0
Non-injury	1	0	1	0
Total	1	0	1	0

Annual Fatality Statistics

Year	1998	1999	2000	2001	2002
Aboriginal NT Residents	29	17	18	25	13
Non - Aboriginal NT Residents	25	24	23	12	9
Interstate visitors	5	4	3	4	3
Overseas visitors	10	4	7	9	6
Total	69	49	51	50	31

01 Jan to 31 August 2002

Highest Injury Level Crashes	Bus & Coach		Rigid Truck > 4.5 GVM		Articulated Vehicle (Semi)		Road Train (Double)		Road Train (Triple)		Total
	NT	Int.	NT	Int.	NT	Int.	NT	Int.	NT	Int.	
Fatal										1	1
Serious	1		1		1						3
Minor	4		3				2		3	3	15
Non-injury	11		19	3	3	1	1		4	2	44
Total	16		26	3	5	1	3		13	2	63

Note: Int. = Interstate

	12 months to 31 August 2001	12 months to 31 August 2002	% Change
Total Fatalities	48	51	6.3%
Total Injuries	1237	929	-24.9%
Total Fatal Crashes	44	41	-6.8%
Total Injury Crashes	846	648	-23.4%
Total Non-injury Crashes	1645	1370	-16.7%
Seatbelt not Worn Fatalities			
Fatalities	17	17	0.0%
Injuries	67	42	-37.3%
Speed- Related			
Fatal Crashes	5	9	80.0%
Injury Crashes	81	61	-24.7%
Non-injury Crashes	110	91	-17.3%
Alcohol-Related			
Fatal Crashes	16	12	-25.0%
Injury Crashes	95	55	-42.1%
Non-injury Crashes	93	77	-17.2%

Highest Injury Level Crashes	12 months to 31 August 2001		12 months to 31 August 2002		% Change	
	NT	Int.	NT	Int.	NT	Int.
Fatal	1	0	2	0	100.0%	0.0%
Serious	11	3	4	2	-63.6%	-33.3%
Minor	9	6	15	3	66.7%	-50.0%
Non-injury	50	16	50	10	0.0%	-37.5%
Total	96	25	86	13	-10.4%	-37.5%

This report is produced using the Vehicle Accident Database. Information is correct as at 31 August 2002.

Contact Officers
Graham Kwong Research /Project Officer, tel: 89247147
Don Shean, VADB Manager, tel: 89247352

Accidents within the last four (4) weeks may not be reflected in the Vehicle Accident Database

