

## Key Statistics

Between 1 January and 31 March 2007 there have been 10 fatalities and 106 serious injuries on Northern Territory roads.

### Summary of the 12 months to date fatalities and serious injuries compared with the same period in the preceding 12 months period:

49 fatalities (2% decrease)

534 serious injuries (11.7% increase)

2 overseas visitor fatalities (100% increase)

37 overseas visitor serious injuries (60.9% increase)

5 interstate visitor fatalities (16.7% decrease)

60 interstate visitor serious injuries (9.1% increase)

24 Indigenous fatalities (7.7% decrease)

138 Indigenous serious injuries (34% increase)

14 pedestrian fatalities (55.6% increase)

37 pedestrian serious injuries (60.9% increase)

10 pedestrian fatalities were Indigenous (71% of total pedestrians)

6 motorcycle fatalities (100% increase)

46 motorcycle serious injuries (9.5% increase)

Of the 49 fatalities 12 months to date, 4% were overseas visitors and 10% were interstate visitors.

49% were Indigenous people. 29% were pedestrians and 12% were motorcyclists.

### Summary of 12 months to date causal and compounding factors compared with the same period in the preceding 12 months period:

27 alcohol related fatalities (6.9% decrease)

105 alcohol related serious injuries (18% increase)

8 speed related fatalities (no change)

72 speed related serious injuries (41.2% increase)

2 fatigue related fatalities (33.3% decrease)

18 fatigue related serious injuries (21.7% decrease)

15 seatbelt related fatalities (31.8% decrease)

63 seatbelt related serious injuries (no change)

Of the 49 fatalities 12 months to date, alcohol related fatalities comprise 55%; speed related comprise

16%; fatigue related comprise 4% and seatbelt related comprise 31%.

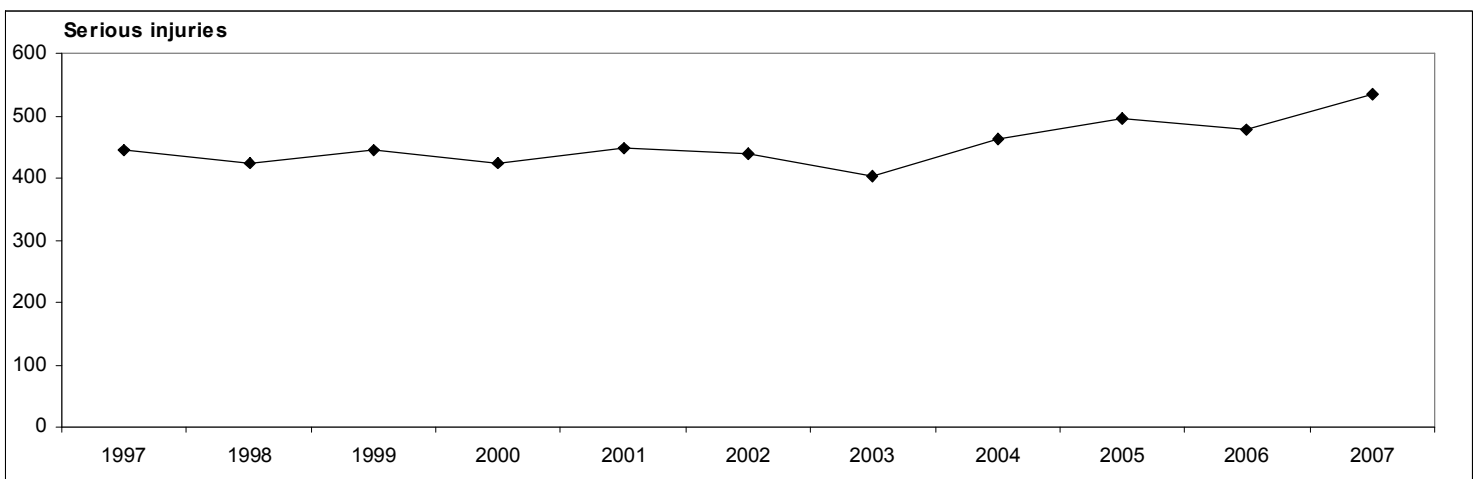
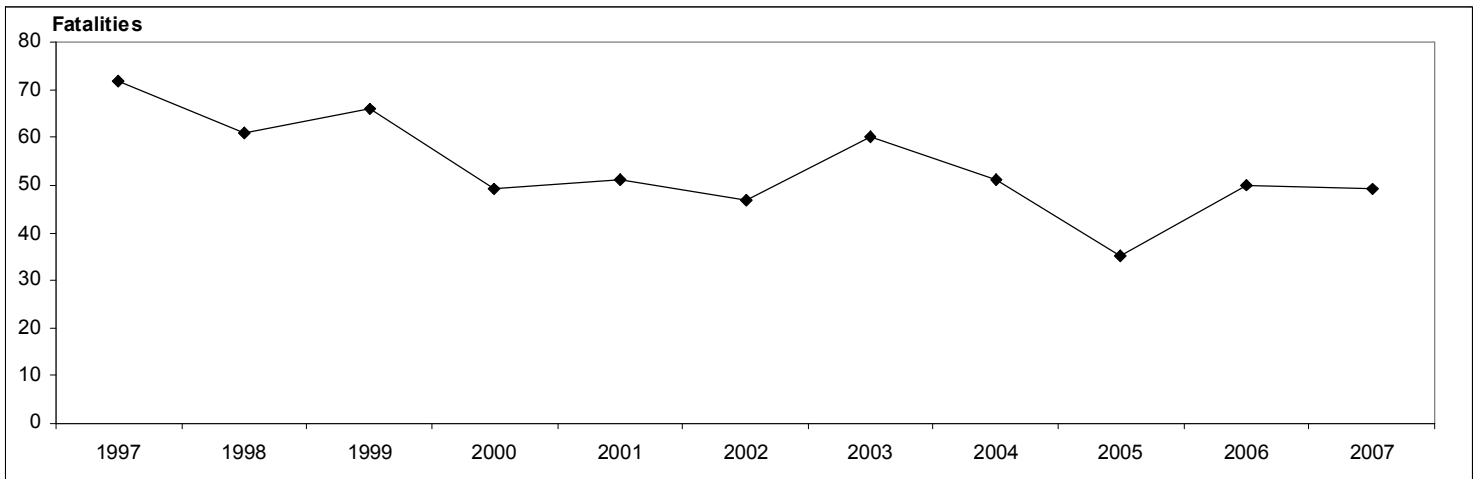
# Territory Road Crash Overview

QUARTERLY STATISTICS JANUARY - MARCH 2007

Causal and compounding factors are not equal to the number of fatalities or serious injuries recorded. There may be more than one causal and/or compounding factor identified for each fatality or serious injury, or Police may not have identified a causal or compounding factor.

Speed related statistics more accurately refer to speeding rather than speed as a causal factor, where a driver was breaking the speed limit or travelling at a dangerous speed. Where there was no speed limit posted on Territory rural roads and highways, cause was likely to be attributed to a non-speed related cause such as 'driver inattention', notwithstanding that speed is a factor in any crash. Speed limits were introduced on rural roads and highways on 1 January 2007.

## Northern Territory fatalities and serious injuries 12 months to date: March 1996 - March 2007



## Summary of fatalities, serious injuries and crashes

Total	1st quarter			Year to date			12-months to date		
	Jan-Mar 07	Jan-Mar 06	% change	Jan-Mar 07	Jan-Mar 06	% change	Apr 06-Mar 07	Apr 05-Mar 06	% change
Fatalities	10	5	100.0%	10	5	100.0%	49	50	-2.0%
Serious injuries	106	97	9.3%	106	97	9.3%	534	478	11.7%

Total crashes	1st quarter			Year to date			12-months to date		
	Jan-Mar 07	Jan-Mar 06	% change	Jan-Mar 07	Jan-Mar 06	% change	Apr 06-Mar 07	Apr 05-Mar 06	% change
Fatal	9	5	80.0%	9	5	80.0%	45	48	-6.3%
Serious injuries	70	77	-9.1%	70	77	-9.1%	364	344	5.8%

## Causal and compounding factors

Fatalities	1st quarter			Year to date			12-months to date		
	Jan-Mar 07	Jan-Mar 06	% change	Jan-Mar 07	Jan-Mar 06	% change	Apr 06-Mar 07	Apr 05-Mar 06	% change
<b>Causal factors</b>									
Alcohol	6	3	100.0%	6	3	100.0%	27	29	-6.9%
Speed	1	1	0.0%	1	1	0.0%	8	8	0.0%
Fatigue	1	1	0.0%	1	1	0.0%	2	3	-33.3%
<b>Compounding factor</b>									
Seatbelt	3	1	200.0%	3	1	200.0%	15	22	-31.8%

Serious injuries	1st quarter			Year to date			12-months to date		
	Jan-Mar 07	Jan-Mar 06	% change	Jan-Mar 07	Jan-Mar 06	% change	Apr 06-Mar 07	Apr 05-Mar 06	% change
<b>Causal factors</b>									
Alcohol	21	26	-19.2%	21	26	-19.2%	105	89	18.0%
Speed	22	5	340.0%	22	5	340.0%	72	51	41.2%
Fatigue	5	7	-28.6%	5	7	-28.6%	18	23	-21.7%
<b>Compounding factor</b>									
Seatbelt	13	11	18.2%	13	11	18.2%	63	63	0.0%

## Residency status

Fatalities	1st quarter			Year to date			12-months to date		
	Jan-Mar 07	Jan-Mar 06	% change	Jan-Mar 07	Jan-Mar 06	% change	Apr 06-Mar 07	Apr 05-Mar 06	% change
Northern Territory	6	4	50.0%	6	4	50.0%	41	43	-4.7%
Overseas visitor	1	0	0.0%	1	0	0.0%	2	1	100.0%
Interstate visitor	2	1	100.0%	2	1	100.0%	5	6	-16.7%
Not stated	1	0	0.0%	1	0	0.0%	1	0	0.0%

Serious injuries	1st quarter			Year to date			12-months to date		
	Jan-Mar 07	Jan-Mar 06	% change	Jan-Mar 07	Jan-Mar 06	% change	Apr 06-Mar 07	Apr 05-Mar 06	% change
Northern Territory	83	87	-4.6%	83	87	-4.6%	425	394	7.9%
Overseas visitor	7	0	0.0%	7	0	0.0%	37	23	60.9%
Interstate visitor	11	10	10.0%	11	10	10.0%	60	55	9.1%
Not stated	5	0	0.0%	5	0	0.0%	12	6	100.0%

# Territory Road Crash Overview

QUARTERLY STATISTICS JANUARY - MARCH 2007

## Non-Indigenous and Indigenous

Fatalities	1st quarter			Year to date			12-months to date		
	Jan-Mar 07	Jan-Mar 06	% change	Jan-Mar 07	Jan-Mar 06	% change	Apr 06-Mar 07	Apr 05-Mar 06	% change
Non-Indigenous	7	2	250.0%	7	2	250.0%	25	24	4.2%
Indigenous	3	3	0.0%	3	3	0.0%	24	26	-7.7%

Serious injuries	1st quarter			Year to date			12-months to date		
	Jan-Mar 07	Jan-Mar 06	% change	Jan-Mar 07	Jan-Mar 06	% change	Apr 06-Mar 07	Apr 05-Mar 06	% change
Non-Indigenous	79	75	5.3%	79	75	5.3%	396	375	5.6%
Indigenous	27	22	22.7%	27	22	22.7%	138	103	34.0%

## Road users

Fatalities	1st quarter			Year to date			12-months to date		
	Jan-Mar 07	Jan-Mar 06	% change	Jan-Mar 07	Jan-Mar 06	% change	Apr 06-Mar 07	Apr 05-Mar 06	% change
Driver	6	1	500.0%	6	1	500.0%	21	20	5.0%
Passenger	1	2	-50.0%	1	2	-50.0%	8	15	-46.7%
Pedestrian	2	1	100.0%	2	1	100.0%	14	9	55.6%
Motorcyclist	1	1	0.0%	1	1	0.0%	6	3	100.0%
Motorcycle pillion	0	0	0.0%	0	0	0.0%	0	0	0.0%
Bicyclist	0	0	0.0%	0	0	0.0%	0	3	-100.0%

Serious injuries	1st quarter			Year to date			12-months to date		
	Jan-Mar 07	Jan-Mar 06	% change	Jan-Mar 07	Jan-Mar 06	% change	Apr 06-Mar 07	Apr 05-Mar 06	% change
Driver	37	57	-35.1%	37	57	-35.1%	236	258	-8.5%
Passenger	44	21	109.5%	44	21	109.5%	186	130	43.1%
Pedestrian	8	7	14.3%	8	7	14.3%	37	23	60.9%
Motorcyclist	10	10	0.0%	10	10	0.0%	46	42	-33.3%
Motorcycle pillion	1	1	0.0%	1	1	0.0%	2	3	9.5%
Bicyclist	5	1	400.0%	5	1	400.0%	22	15	46.7%
Bicycle pillion	1	0	0.0%	1	0	0.0%	1	0	0.0%
Not known	0	0	0.0%	0	0	0.0%	4	7	-42.9%

## Pedestrians

Fatalities	1st quarter			Year to date			12-months to date		
	Jan-Mar 07	Jan-Mar 06	% change	Jan-Mar 07	Jan-Mar 06	% change	Apr 06-Mar 07	Apr 05-Mar 06	% change
Non-Indigenous	1	0	0.0%	1	0	0.0%	4	0	0.0%
Indigenous	1	1	0.0%	1	1	0.0%	10	9	11.1%

Serious injuries	1st quarter			Year to date			12-months to date		
	Jan-Mar 07	Jan-Mar 06	% change	Jan-Mar 07	Jan-Mar 06	% change	Apr 06-Mar 07	Apr 05-Mar 06	% change
Non-Indigenous	2	1	100.0%	2	1	100.0%	11	8	37.5%
Indigenous	6	6	0.0%	6	6	0.0%	26	15	73.3%

# Territory Road Crash Overview

QUARTERLY STATISTICS JANUARY - MARCH 2007

## Gender

Fatalities	1st quarter			Year to date			12-months to date		
	Jan-Mar 07	Jan-Mar 06	% change	Jan-Mar 07	Jan-Mar 06	% change	Apr 06-Mar 07	Apr 05-Mar 06	% change
Male	8	3	166.7%	8	3	166.7%	37	31	19.4%
Female	2	2	0.0%	2	2	0.0%	12	19	-36.8%

Serious injuries	1st quarter			Year to date			12-months to date		
	Jan-Mar 07	Jan-Mar 06	% change	Jan-Mar 07	Jan-Mar 06	% change	Apr 06-Mar 07	Apr 05-Mar 06	% change
Male	73	68	7.4%	73	68	7.4%	335	293	14.3%
Female	33	29	13.8%	33	29	13.8%	199	185	7.6%

## Age group by years

Fatalities	1st quarter			Year to date			12-months to date		
	Jan-Mar 07	Jan-Mar 06	% change	Jan-Mar 07	Jan-Mar 06	% change	Apr 06-Mar 07	Apr 05-Mar 06	% change
0-4	0	0	0.0%	0	0	0.0%	1	4	-75.0%
5-9	0	0	0.0%	0	0	0.0%	1	1	0.0%
10-14	0	0	0.0%	0	0	0.0%	0	1	-100.0%
15-19	1	0	0.0%	1	0	0.0%	6	3	100.0%
20-24	1	3	-66.7%	1	3	-66.7%	7	4	75.0%
25-29	1	1	0.0%	1	1	0.0%	4	5	-20.0%
30-34	1	1	0.0%	1	1	0.0%	6	8	-25.0%
35-39	1	0	0.0%	1	0	0.0%	6	7	-14.3%
40-44	0	0	0.0%	0	0	0.0%	5	4	25.0%
45-49	2	0	0.0%	2	0	0.0%	4	5	-20.0%
50+	1	0	0.0%	1	0	0.0%	7	8	-12.5%
Unknown	2	0	0.0%	2	0	0.0%	2	0	0.0%

Serious injuries	1st quarter			Year to date			12-months to date		
	Jan-Mar 07	Jan-Mar 06	% change	Jan-Mar 07	Jan-Mar 06	% change	Apr 06-Mar 07	Apr 05-Mar 06	% change
0-4	1	2	-50.0%	1	2	-50.0%	12	4	200.0%
5-9	2	0	0.0%	2	0	0.0%	13	8	62.5%
10-14	2	1	100.0%	2	1	100.0%	9	8	12.5%
15-19	20	11	81.8%	20	11	81.8%	65	66	-1.5%
20-24	12	19	-36.8%	12	19	-36.8%	66	84	-21.4%
25-29	16	13	23.1%	16	13	23.1%	71	56	26.8%
30-34	7	8	-12.5%	7	8	-12.5%	58	46	26.1%
35-39	13	10	30.0%	13	10	30.0%	61	35	74.3%
40-44	10	7	42.9%	10	7	42.9%	59	31	90.3%
45-49	7	11	-36.4%	7	11	-36.4%	30	49	-38.8%
50+	11	13	-15.4%	11	13	-15.4%	78	85	-8.2%
Unknown	5	2	150.0%	5	2	150.0%	12	6	100.0%

# Territory Road Crash Overview

QUARTERLY STATISTICS JANUARY - MARCH 2007

## Crash type

Fatal crashes	1st quarter			Year to date			12-months to date		
	Jan-Mar 07	Jan-Mar 06	% change	Jan-Mar 07	Jan-Mar 06	% change	Apr 06-Mar 07	Apr 05-Mar 06	% change
Single vehicle	5	2	150.0%	5	2	150.0%	20	28	-28.6%
Multiple vehicle	4	3	33.3%	4	3	33.3%	25	19	31.6%
Other accident	0	0	0.0%	0	0	0.0%	0	1	-100.0%
Hit animal	0	0	0.0%	0	0	0.0%	0	0	0.0%

Serious injury crashes	1st quarter			Year to date			12-months to date		
	Jan-Mar 07	Jan-Mar 06	% change	Jan-Mar 07	Jan-Mar 06	% change	Apr 06-Mar 07	Apr 05-Mar 06	% change
Single vehicle	31	39	-20.5%	31	39	-20.5%	196	163	20.2%
Multiple vehicle	37	36	2.8%	37	36	2.8%	157	162	-3.1%
Other accident	1	1	0.0%	1	1	0.0%	5	9	-44.4%
Hit animal	1	1	0.0%	1	1	0.0%	6	9	-33.3%
Unknown	0	0	0.0%	0	0	0.0%	0	1	-100.0%

## Crashes by region

Fatal crashes	1st quarter			Year to date			12-months to date		
	Jan-Mar 07	Jan-Mar 06	% change	Jan-Mar 07	Jan-Mar 06	% change	Apr 06-Mar 07	Apr 05-Mar 06	% change
Darwin	1	1	0.0%	1	1	0.0%	17	17	0.0%
Central Australia	6	2	200.0%	6	2	200.0%	15	15	0.0%
Katherine	2	2	0.0%	2	2	0.0%	7	10	-30.0%
Tennant Creek	0	0	0.0%	0	0	0.0%	2	3	-33.3%
East Arnhem	0	0	0.0%	0	0	0.0%	4	3	33.3%

Serious injury crashes	1st quarter			Year to date			12-months to date		
	Jan-Mar 07	Jan-Mar 06	% change	Jan-Mar 07	Jan-Mar 06	% change	Apr 06-Mar 07	Apr 05-Mar 06	% change
Darwin	48	49	-2.0%	48	49	-2.0%	219	215	1.9%
Central Australia	6	11	-45.5%	6	11	-45.5%	60	60	0.0%
Katherine	6	7	-14.3%	6	7	-14.3%	45	31	45.2%
Tennant Creek	5	6	-16.7%	5	6	-16.7%	28	26	7.7%
East Arnhem	5	4	25.0%	5	4	25.0%	12	12	0.0%

The statistics presented in this report reflect data recorded on the Northern Territory Vehicle Accident Database at the time of publication. All figures may be subject to revision as crash information or detail is updated.

For further information: visit [www.roadsafety.nt.gov.au](http://www.roadsafety.nt.gov.au) - email [roadsafety@nt.gov.au](mailto:roadsafety@nt.gov.au) - phone (08) 8924 7019