

Territory road trauma overview



Summary overview: July-Sep 2005

Table 1-1 Break up of fatal crashes and fatalities

	3rd Quarter	YTD
Fatal crashes break up	20	39
By crash type		
Hit pedestrian	5	6
Ran off road	8	19
Overtaken	3	6
Angle collision	1	4
Rear end	1	2
Head on	1	1
Other accident	1	1
By road surface type		
Sealed - Dry	13	25
Sealed - Wet	0	2
Unsealed - Dry	4	7
Not yet stated	3	5
By area		
Rural	13	27
Urban	7	12

	3rd Quarter	YTD
Fatalities break up	20	42
By gender		
Male	13	28
Female	7	14
By residency status		
NT <i>Indigenous</i>	10	17
NT <i>Non-Indigenous</i>	5	15
Interstate	4	8
Overseas	1	2

July - September 2005

For further information contact the
 Road Safety Branch
 Department of Planning and Infrastructure
 GPO Box 2520
 Darwin NT 0801
 Phone: (08) 8924 7147
 Fax: (08) 8924 7077
 Email: roadsafety@nt.gov.au
 Web: www.roadsafety@nt.gov.au

Vision:

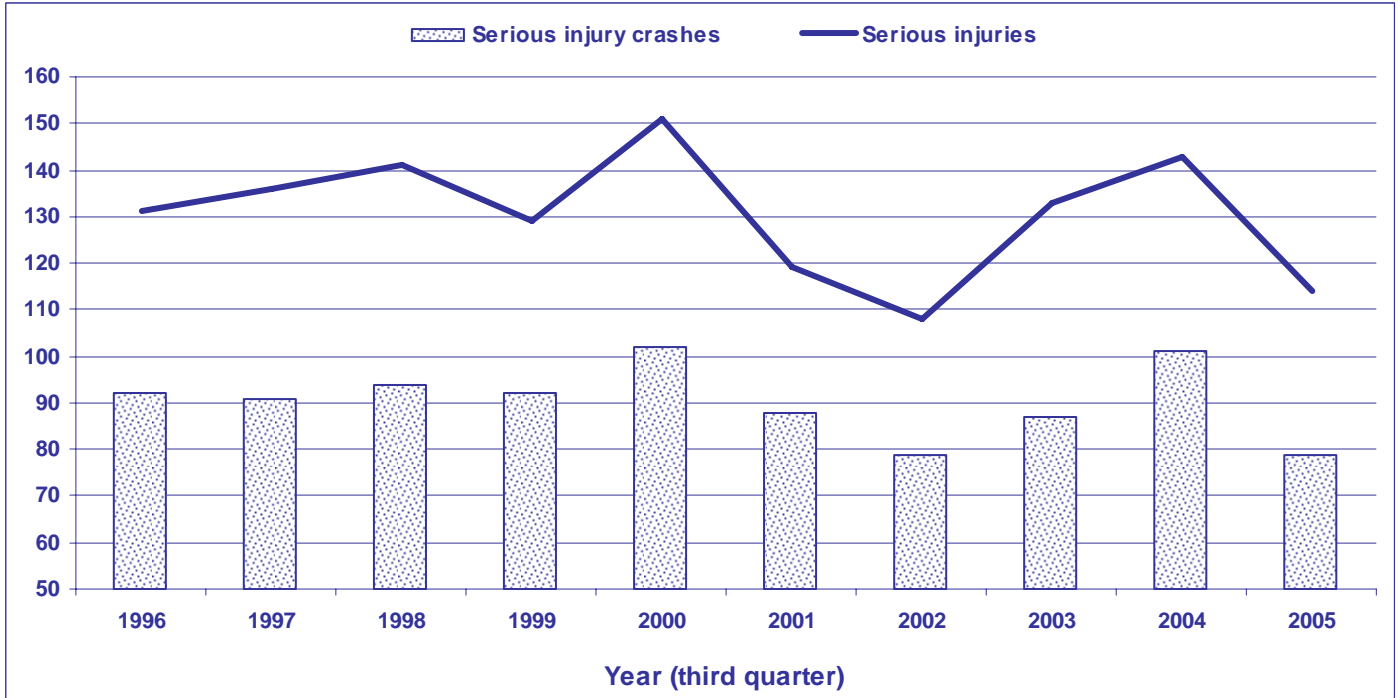
Reduced Road Trauma

Summary overview: July-Sep 2005

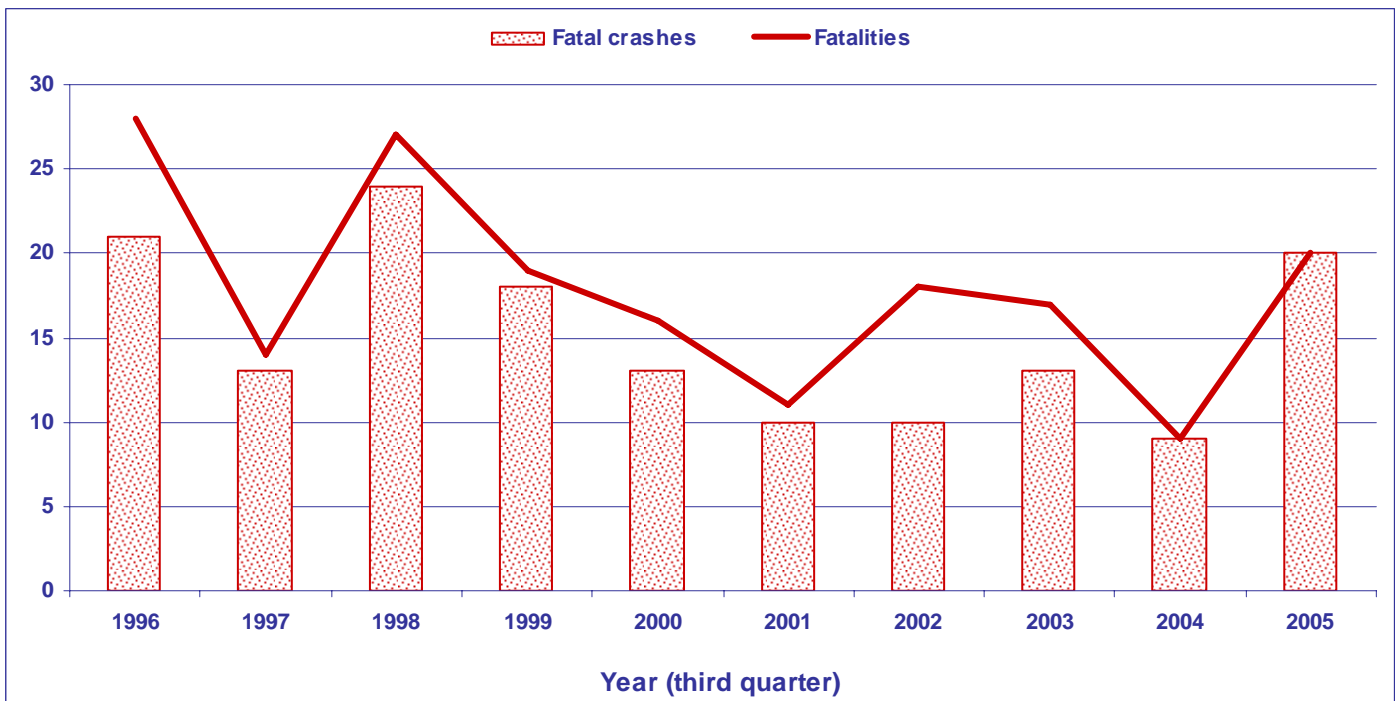
Table 1-2: Summary of road crashes and fatalities

	July to Sep 2004	July to Sep 2005	% Change	12 months to 30 Sep 2004	12 months to 30 Sep 2005	% Change
Total Fatalities	9	20	122.2%	37	51	37.8%
Total Male Fatalities	6	13	116.7%	27	32	18.5%
Total Female Fatalities	3	7	133.3%	10	19	90.0%
Total Injuries	298	244	-18.1%	1032	987	-4.4%
Total Fatal Crashes	9	20	122.2%	35	47	34.3%
Total Injury Crashes	207	167	-19.3%	744	641	-13.8%
Total Non-Injury Crashes	343	337	-1.7%	1441	1348	-6.5%
Seatbelts Not Worn						
Fatalities	1	8	700.0%	9	25	177.8%
Injuries	24	17	-29.2%	67	89	32.8%
Speed Related						
Fatal Crashes	2	4	100.0%	7	11	57.1%
Injury Crashes	28	11	-60.7%	94	64	-31.9%
Alcohol Related						
Fatal Crashes	5	8	60.0%	17	22	29.4%
Injury Crashes	19	11	-42.1%	74	75	1.4%
Fatigue Related						
Fatal Crashes	0	1	100.0%	3	2	-33.3%
Injury Crashes	4	2	-50.0%	17	19	11.8%
Pedestrian Fatalities						
Indigenous	3	5	66.7%	10	6	-40.0%
Non Indigenous	0	0	0.0%	1	0	-100.0%

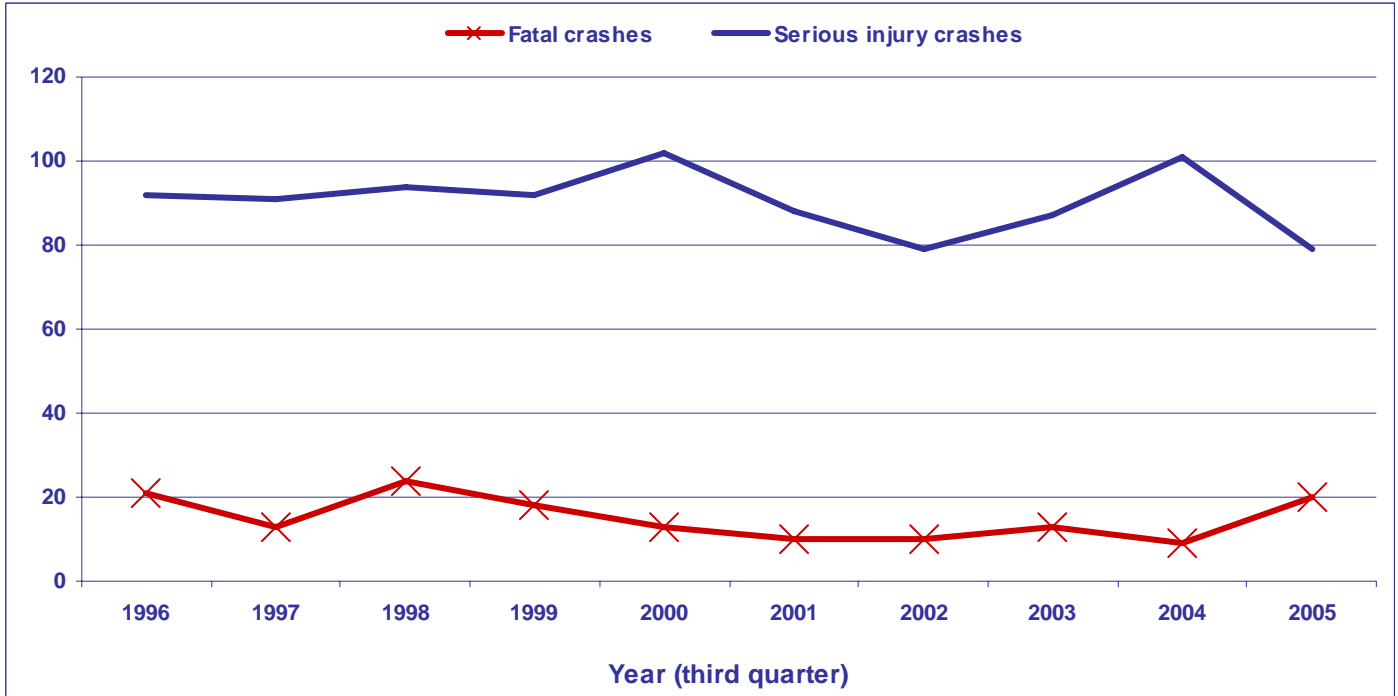
Graph 1-1: Serious injury crashes and serious injuries



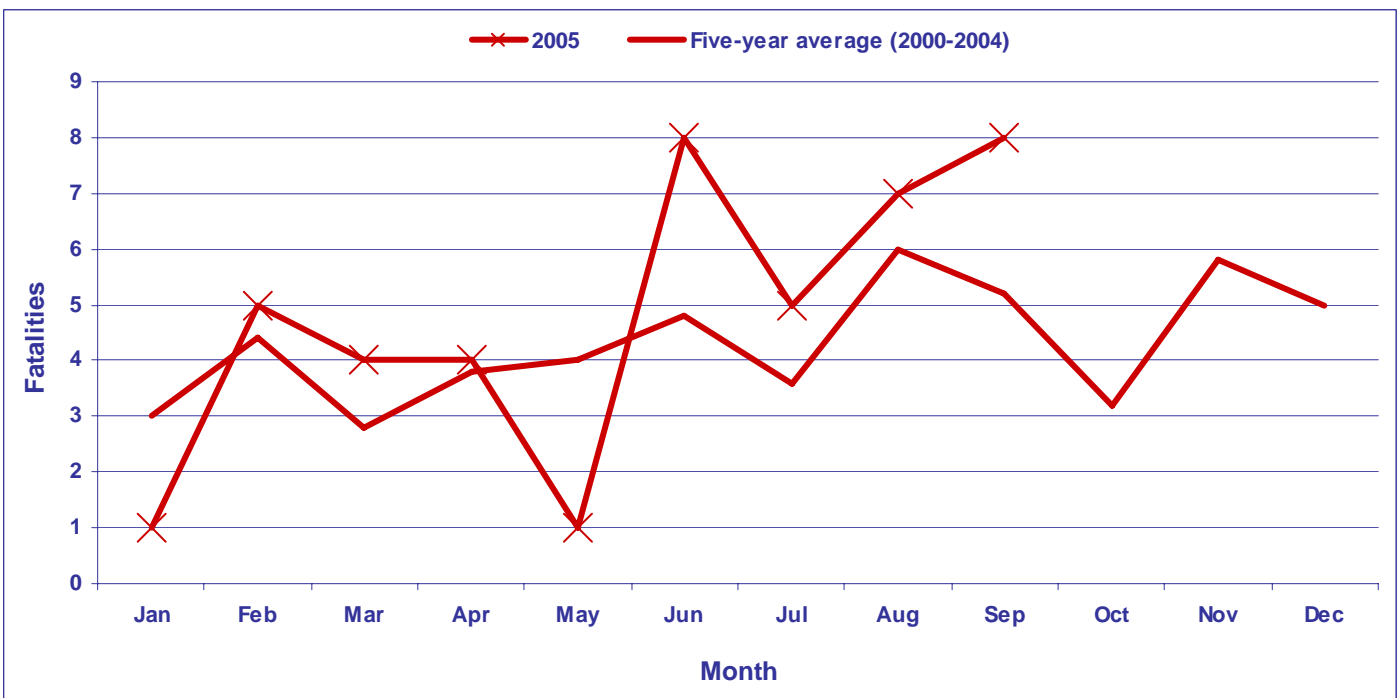
Graph 1-2: Fatal crashes and fatalities



Graph 1-3: Fatal crashes and serious injury crashes



Graph 1-4: Fatalities - Current year against five-year average



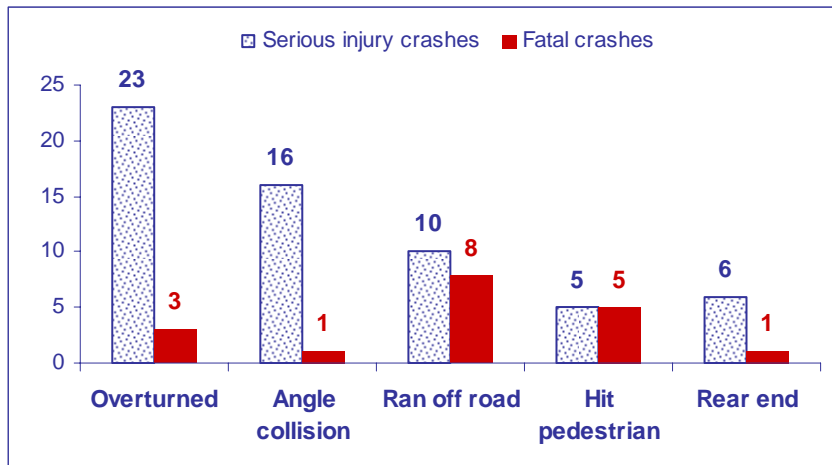
NT serious injury/fatal crashes: July-Sep 2005

2-1: Serious injury/fatal crashes by crash type

Serious injury crashes

Crash type	2005	Average 2000-2004	% Total
Overtuned	23	22.6	29.1%
Angle collision	16	17.2	20.3%
Ran off road	10	16.0	12.7%
Hit pedestrian	5	10.4	6.3%
Rear end	6	7.6	7.6%
Fell off motorcycle	4	5.2	5.1%
Head on	2	3.2	2.5%
Hit fixed object	2	2.6	2.5%
Side swipe	8	2.0	10.1%
Hit parked vehicle	0	1.4	0.0%
Other accident	1	1.2	1.3%
Hit cattle/buffalo	1	0.8	1.3%
Hit other object	0	0.8	0.0%
Hit other animal	0	0.4	0.0%
Unknown	1	0.0	1.3%
Total	79	91.4	100.0%

Top five crash type

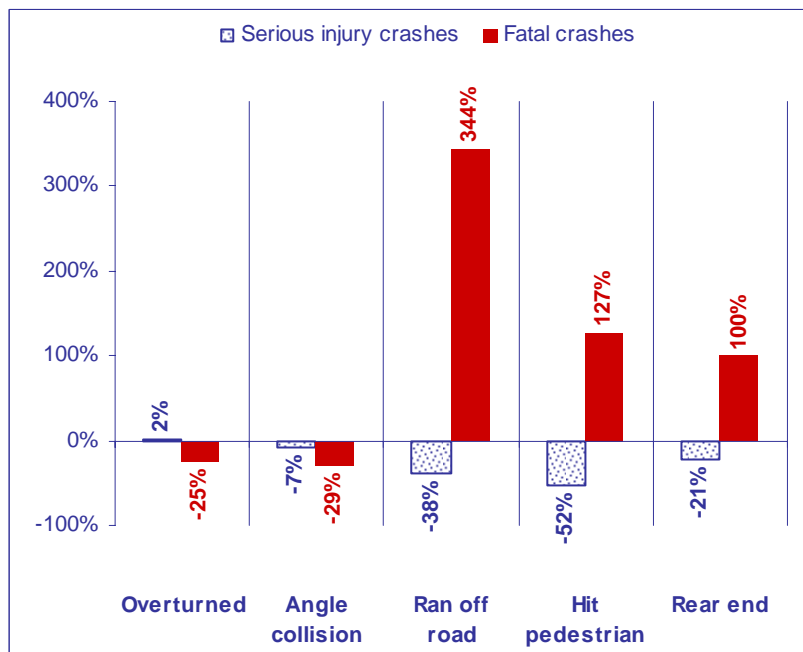


Top five crash data for third quarter 2005

Fatal crashes

Crash type	2005	Average 2000-2004	% Total
Overtuned	3	4.0	15.0%
Hit pedestrian	5	2.2	25.0%
Ran off road	8	1.8	40.0%
Angle collision	1	1.4	5.0%
Head on	1	0.6	5.0%
Side swipe	0	0.4	0.0%
Hit cattle/buffalo	0	0.2	0.0%
Hit fixed object	0	0.2	0.0%
Other accident	1	0.2	5.0%
Rear end	1	0.0	5.0%
Total	20	11.0	100.0%

Top five crash type - trend 2005



Percentage change between 2005 and corresponding five-year average

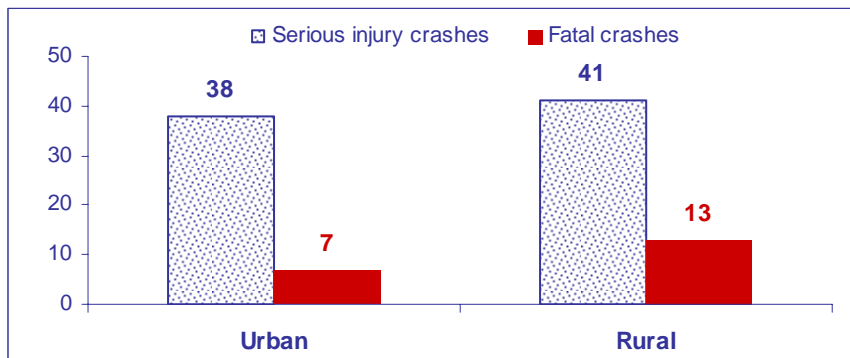
NT serious injury/fatal crashes: July-Sep 2005

2-2: Serious injury/fatal crashes by area (rural/urban)

Serious injury crashes

Area	2005	Average 2000-2004	% Total
Urban	38	49.8	48.1%
Rural	41	41.6	51.9%
Total	79	91.4	100.0%

Crashes by area

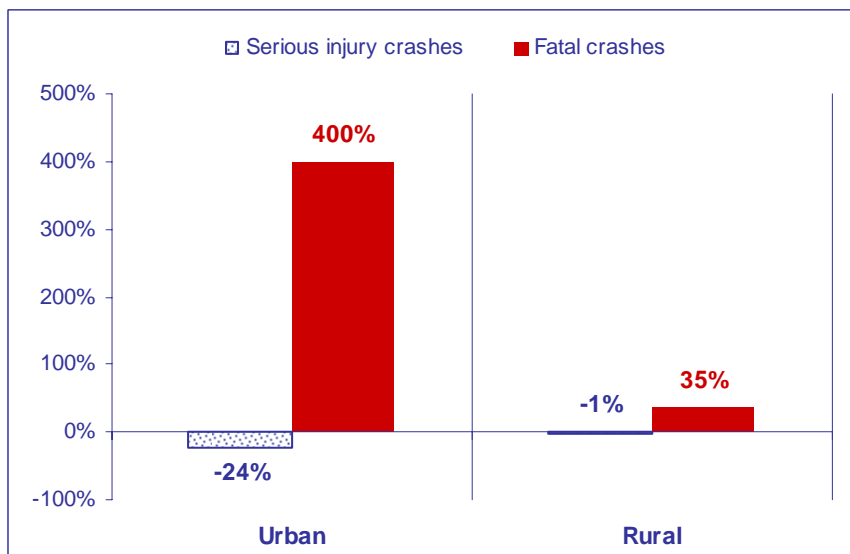


Crash data for third quarter 2005

Fatal crashes

Area	2005	Average 2000-2004	% Total
Urban	7	1.4	35.0%
Rural	13	9.6	65.0%
Total	20	11.0	100.0%

Crashes by area - trend 2005



Percentage change between 2005 and corresponding five-year average

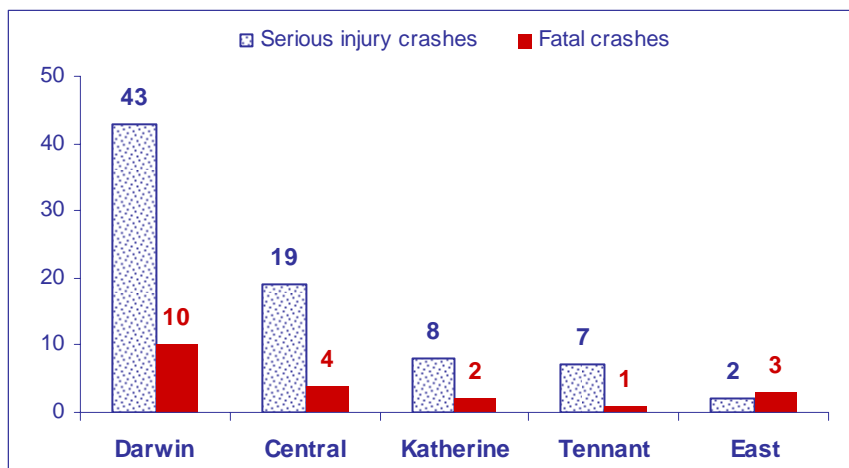
NT serious injury/fatal crashes: July-Sep 2005

2-3: Serious injury/fatal crashes by region

Serious injury crashes

Region	2005	Average 2000-2004	% Total
Darwin	43	54.2	54.4%
Central	19	18.4	24.1%
Katherine	8	9.8	10.1%
Tennant	7	6.8	8.9%
East	2	2.2	2.5%
Total	79	91.4	100.0%

Crashes by region

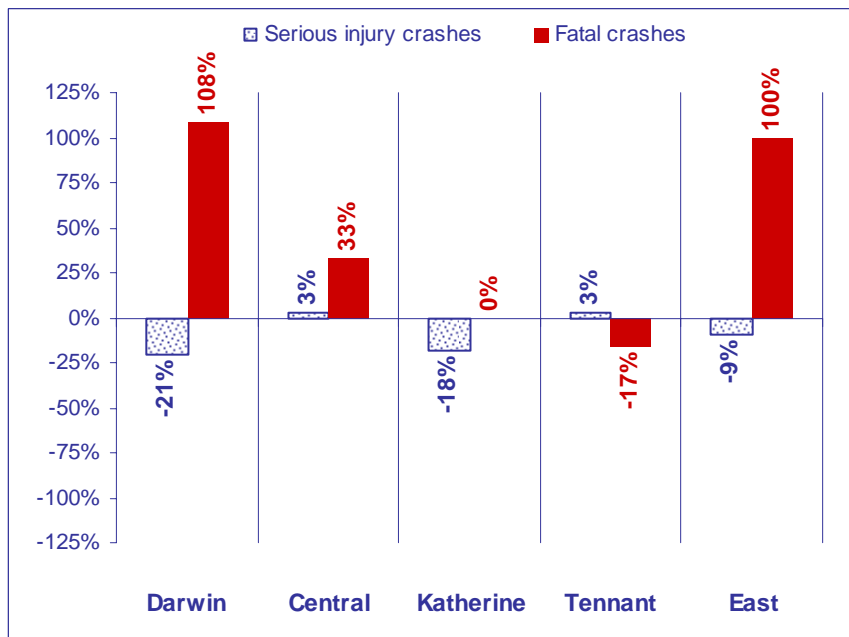


Crash data for third quarter 2005

Fatal crashes

Region	2005	Average 2000-2004	% Total
Darwin	10	4.8	50.0%
Central	4	3.0	20.0%
Katherine	2	2.0	10.0%
Tennant	1	1.2	5.0%
East	3	0.0	15.0%
Total	20	11.0	100.0%

Crashes by region - trend 2005



Percentage change between 2005 and corresponding five-year average

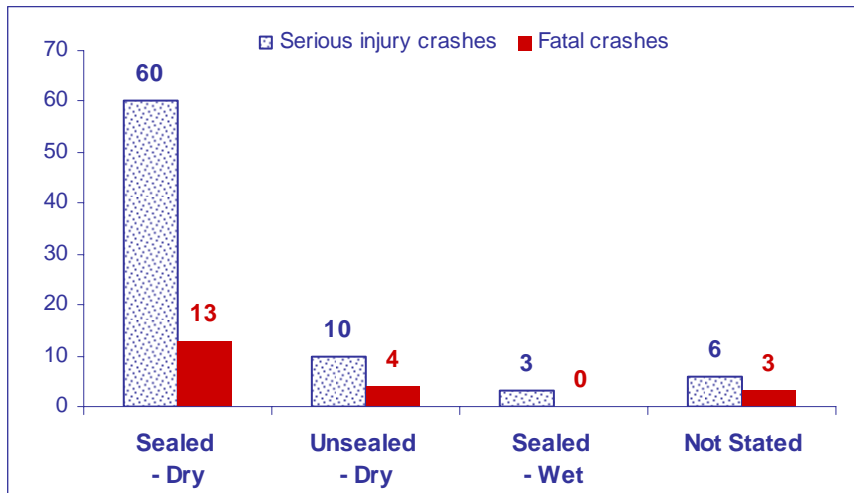
NT serious injury/fatal crashes: July-Sep 2005

2-4: Serious injury/fatal crashes by road condition

Serious injury crashes

Road Condition	2005	Average 2000-2004	% Total
Sealed - Dry	60	75.6	75.9%
Unsealed - Dry	10	13.4	12.7%
Sealed - Wet	3	1.2	3.8%
Not Stated	6	0.6	7.6%
Other	0	0.4	0.0%
Unsealed - Wet	0	0.2	0.0%
Total	79	91.4	100.0%

Crashes by road condition

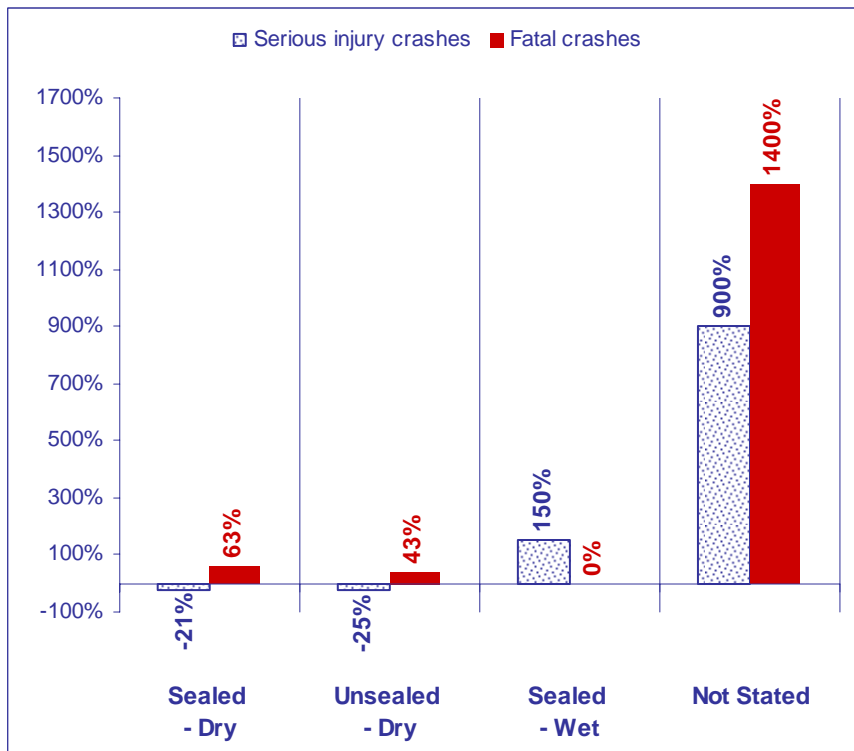


Crash data for third quarter 2005

Fatal crashes

Road Condition	2005	Average 2000-2004	% Total
Sealed - Dry	13	8	65.0%
Unsealed - Dry	4	2.8	20.0%
Not Stated	3	0.2	15.0%
Unsealed - Wet	0	0.0	0.0%
Sealed - Wet	0	0.0	0.0%
Total	20	11.0	100.0%

Crashes by road condition - trend 2005



Percentage change between 2005 and corresponding five-year average

Data for 6 serious injury crashes and 3 fatal crashes recorded as "not stated" not available at time of publication.

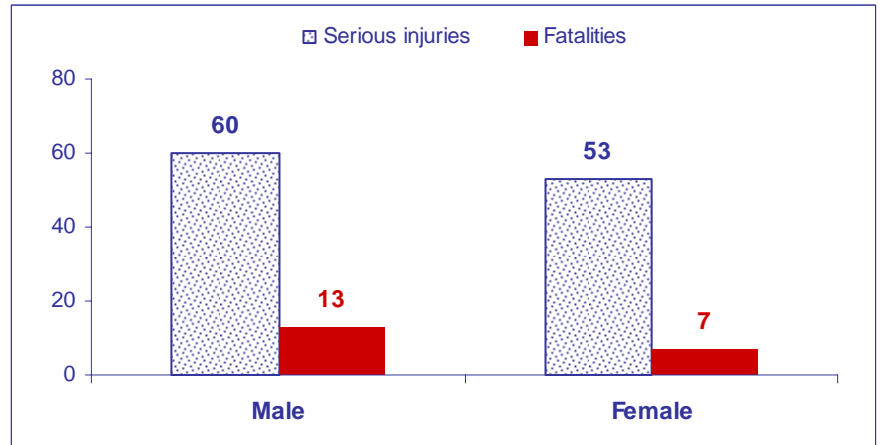
NT serious injuries/fatalities: July-Sep 2005

3-1: Serious injuries/fatalities by gender

Serious injuries

Gender	2005	Average 2000-2004	% Total
Male	60	81.4	53.1%
Female	53	49.2	46.9%
Total	113	130.8	100.0%

Serious injuries/fatalities by gender

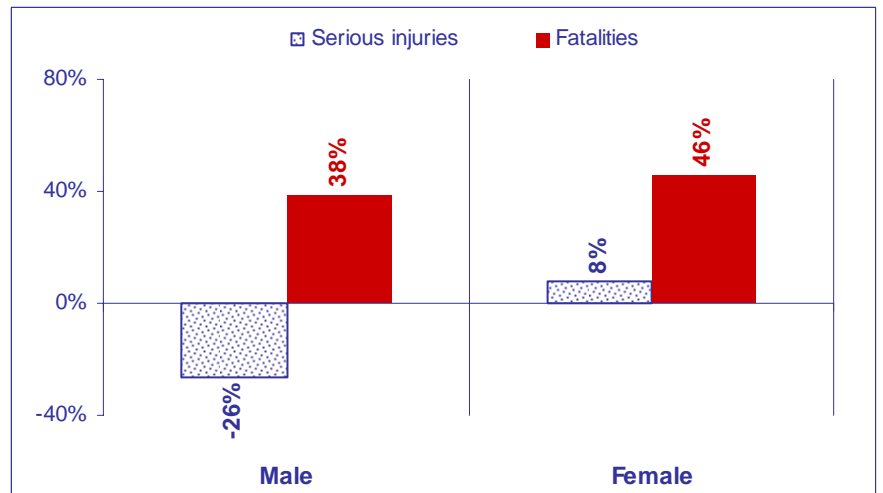


Road trauma data for third quarter 2005

Fatalities

Gender	2005	Average 2000-2004	% Total
Male	13	9.4	65.0%
Female	7	4.8	35.0%
Total	20	14.2	100.0%

Serious injuries/fatalities by gender - trend 2005



Percentage change between 2005 and corresponding five-year average

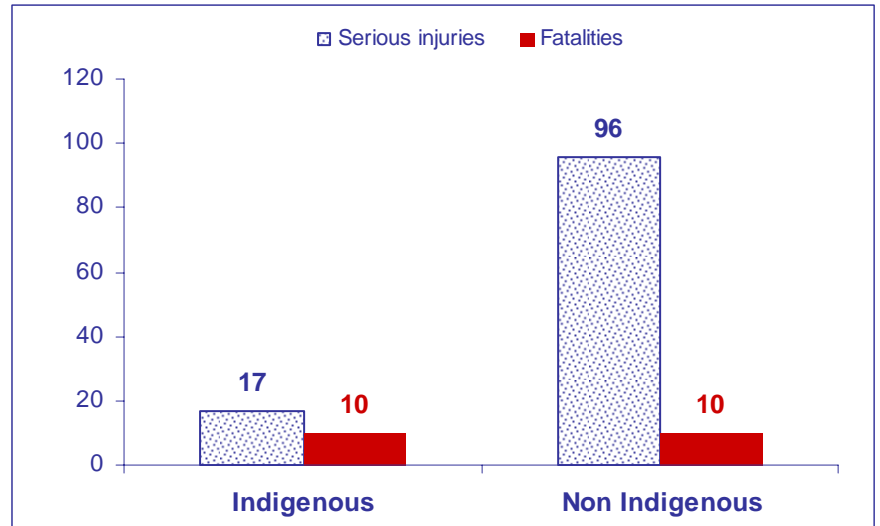
NT serious injuries/fatalities: July-Sep 2005

3-2: Serious injuries/fatalities - Indigenous and Non-Indigenous

Serious injuries

Indigenous and Non-Indigenous	2005	Average 2000-2004	% Total
Non Indigenous	96	104.8	85.0%
Indigenous	17	25.6	15.0%
Total	113	130.8	100.0%

Indigenous and Non-Indigenous

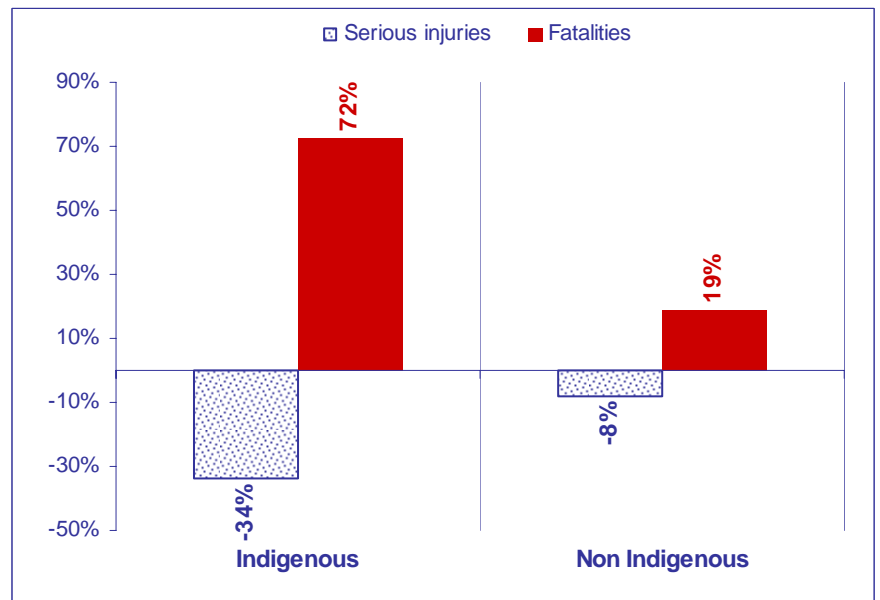


Road trauma data for third quarter 2005

Fatalities

Indigenous and Non-Indigenous	2005	Average 2000-2004	% Total
Non Indigenous	10	8.4	50.0%
Indigenous	10	5.8	50.0%
Total	20	14.2	100.0%

Indigenous and Non-Indigenous



Percentage change between 2005 and corresponding five-year average

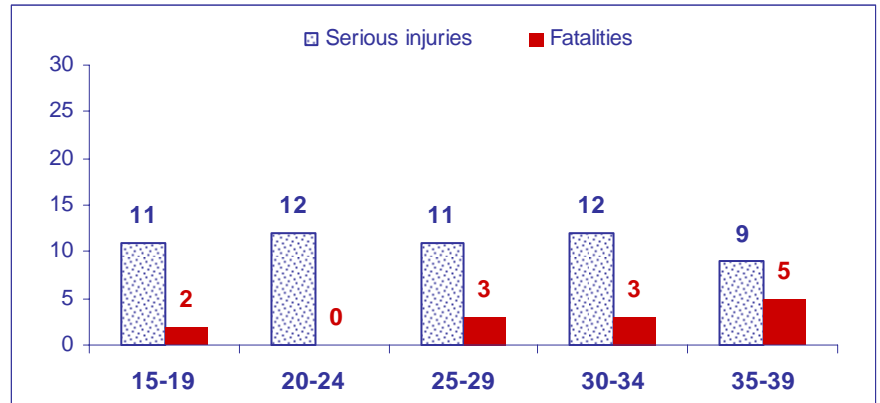
NT serious injuries/fatalities: July-Sep 2005

3-3: Serious injuries/fatalities by age group

Serious injuries

Age group	2005	Average 2000-2004	% Total
0-4	1	3.6	0.9%
5-9	2	3.0	1.8%
10-14	5	3.2	4.4%
15-19	11	10.2	9.7%
20-24	12	22.4	10.6%
25-29	11	15.6	9.7%
30-34	12	17.0	10.6%
35-39	9	12.0	8.0%
40-44	7	12.4	6.2%
45-49	9	7.4	8.0%
50+	33	21.0	29.2%
unknown	1	3.0	0.9%
Total	113	130.8	100.0%

Top five serious injuries/fatalities by age group

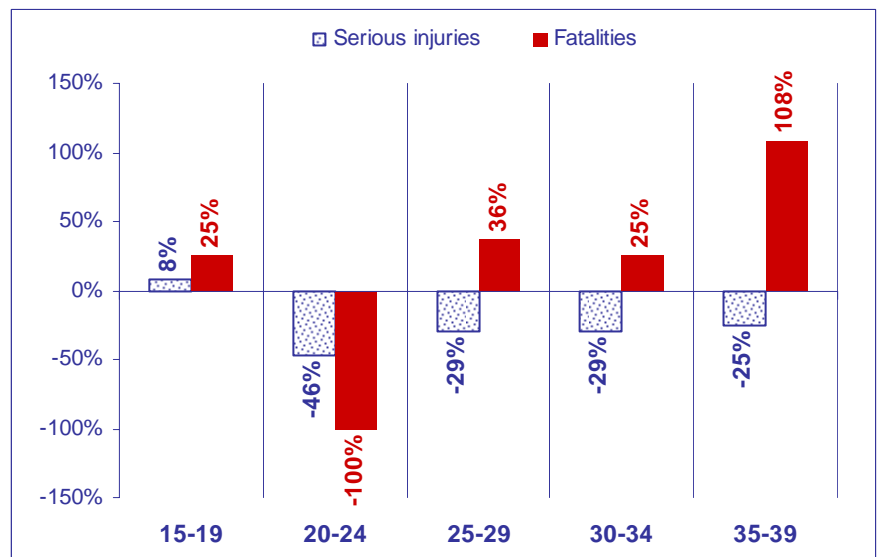


Top five road trauma data for third quarter 2005

Fatalities

Age group	2005	Average 2000-2004	% Total
0-4		0.0	0.0%
5-9	1	0.0	5.0%
10-14	0	0.0	0.0%
15-19	2	1.6	10.0%
20-24	0	2.2	0.0%
25-29	3	2.2	15.0%
30-34	3	2.4	15.0%
35-39	5	2.4	25.0%
40-44	1	1.2	5.0%
45-49	2	0.4	10.0%
50+	2	1.8	10.0%
unknown	1	0.0	5.0%
Total	20	14.2	100.0%

Top five serious injuries/fatalities by age group - trend 2005



Percentage change between 2005 and corresponding five-year average

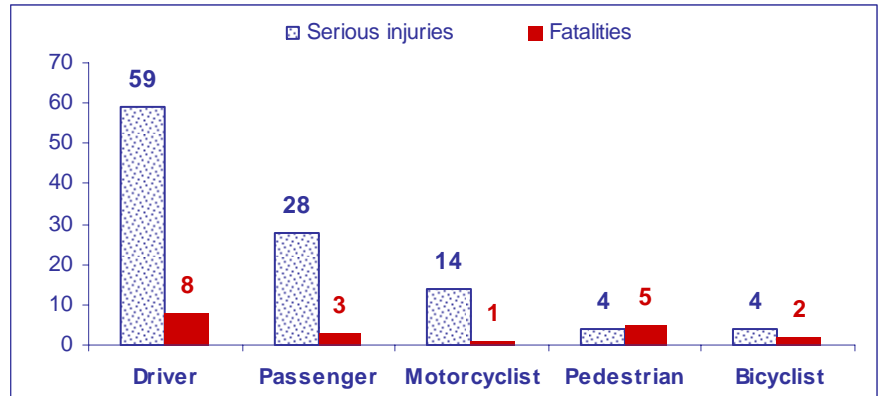
NT serious injuries/fatalities: July-Sep 2005

3-4: Serious injuries/fatalities by road user

Serious injuries

Road users	2005	Average 2000-2004	% Total
Driver	59	58.2	52.2%
Passenger	28	42.4	24.8%
Motorcyclist	14	11.6	12.4%
Pedestrian	4	10.2	3.5%
Bicyclist	4	4.6	3.5%
Passenger - Bus	1	1.6	0.9%
Passenger - Luggage Area	0	1.2	0.0%
Motorcycle Pillion	1	0.6	0.9%
Passenger - Rear Utility/Truck	1	0.4	0.9%
Passenger - Non Seating Position	1	0.0	0.9%
Total	113	130.8	100.0%

Top five serious injuries/fatalities by road user

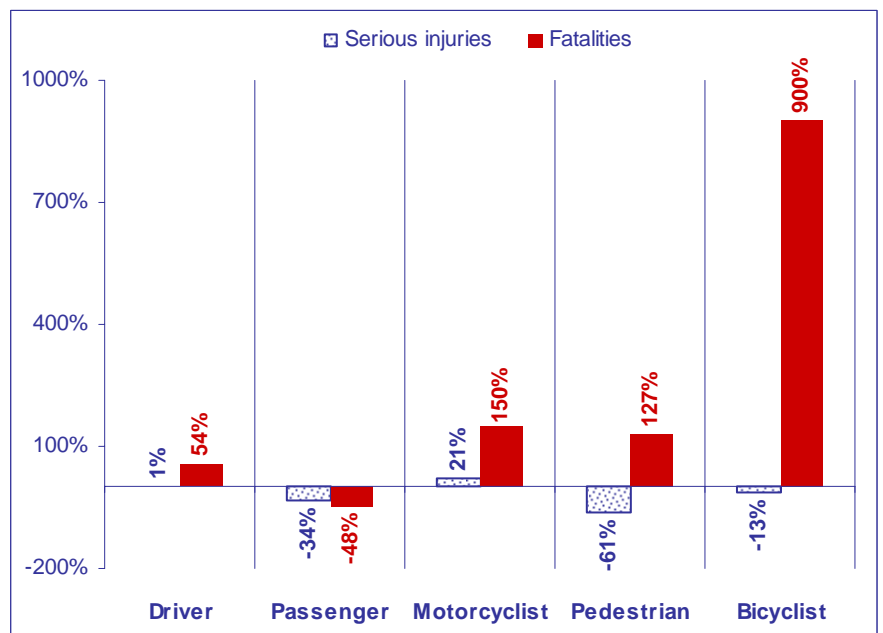


Top five road trauma data for third quarter 2005

Fatalities

Road users	2005	Average 2000-2004	% Total
Passenger	3	5.8	15.0%
Driver	8	5.2	40.0%
Pedestrian	5	2.2	25.0%
Motorcyclist	1	0.4	5.0%
Bicyclist	2	0.2	10.0%
Passenger - Bus	0	0.2	0.0%
Passenger - Non Seating Position	0	0.2	0.0%
Passenger - Luggage Area	1	0.0	5.0%
Total	20	14.2	100.0%

Top five serious injuries/fatalities by road user - trend 2005



Percentage change between 2005 and corresponding five-year average

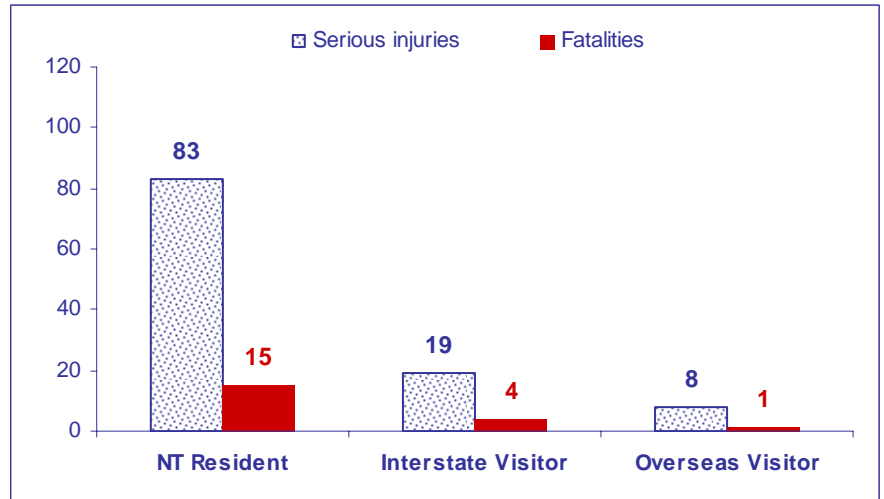
NT serious injuries/fatalities: July-Sep 2005

3-5: Serious injuries/fatalities by residency status

Serious injuries

Residency	2005	Average 2000-2004	% Total
NT Resident	83	96.6	73.5%
Interstate Visitor	19	19.2	16.8%
Overseas Visitor	8	13.6	7.1%
Not Stated	3	1.4	2.7%
Total	113	130.8	100.0%

Serious injuries/fatalities by residency status

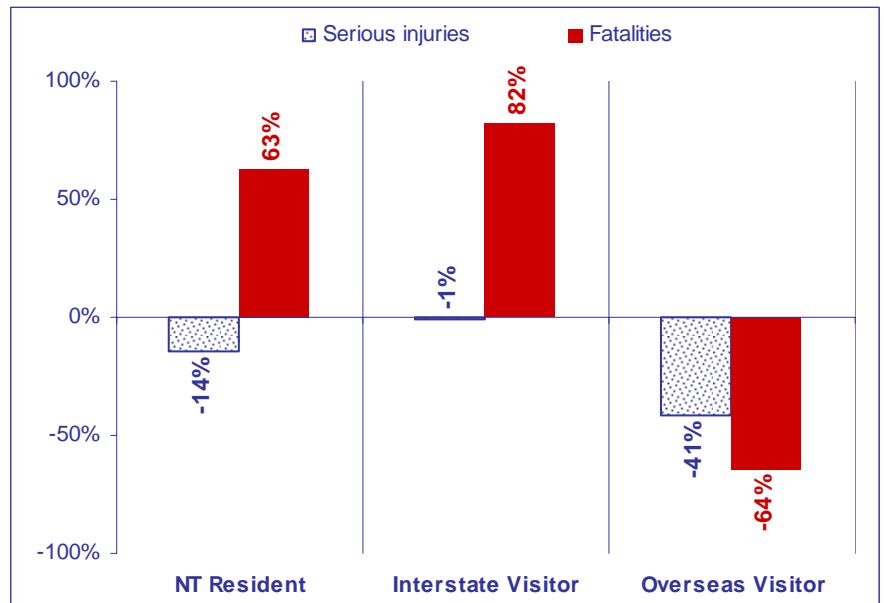


Road trauma data for third quarter 2005

Fatalities

Residency	2005	Average 2000-2004	% Total
NT Resident	15	9.2	75.0%
Overseas Visitor	1	2.8	5.0%
Interstate Visitor	4	2.2	20.0%
Not Stated	0	0.0	0.0%
Total	20	14.2	100.0%

Serious injuries/fatalities by residency status



Percentage change between 2005 and corresponding five-year average

NT main causes of road trauma: July-Sep 2005

Alcohol, Speed, Fatigue, Seatbelts and Pedestrians

4-1: Alcohol related serious injury/fatal crashes

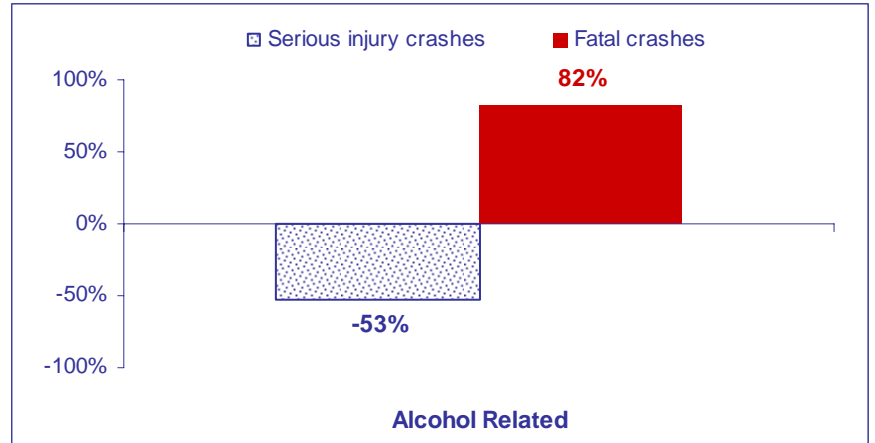
Serious injury crashes

Alcohol	2005	Average 2000-2004	% Total
Non- Alcohol Related	73	78.6	92.4%
Alcohol Related	6	12.8	7.6%
Total	79	91.4	100.0%

Fatal crashes

Alcohol	2005	Average 2000-2004	% Total
Non- Alcohol Related	12	6.6	60.0%
Alcohol Related	8	4.4	40.0%
Total	20	11.0	100.0%

Alcohol related crashes - trend 2005



Percentage change between 2005 and corresponding five-year average

4-2: Speed related serious injury/fatal crashes

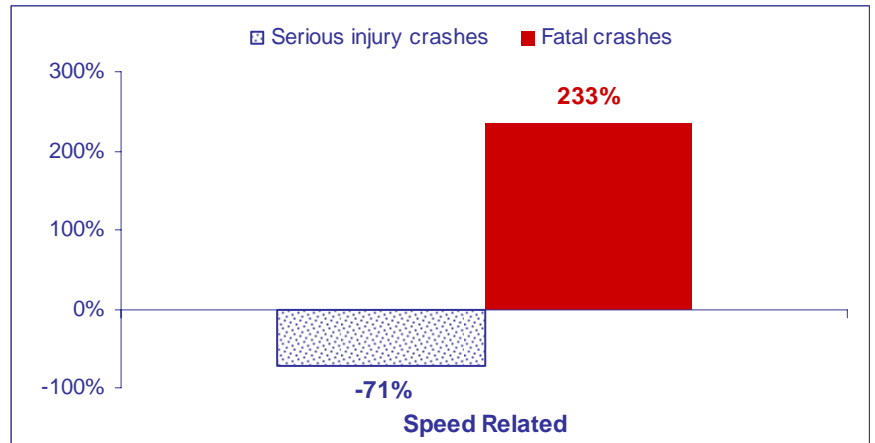
Serious injury crashes

Speed	2005	Average 2000-2004	% Total
Non-Speed Related	76	81.0	96.2%
Speed Related	3	10.4	3.8%
Total	79	91.4	100.0%

Fatal crashes

Speed	2005	Average 2000-2004	% Total
Non-Speed Related	16	9.8	80.0%
Speed Related	4	1.2	20.0%
Total	20	11.0	100.0%

Speed related crashes - trend 2005



Percentage change between 2005 and corresponding five-year average

NT main causes of road trauma: July-Sep 2005

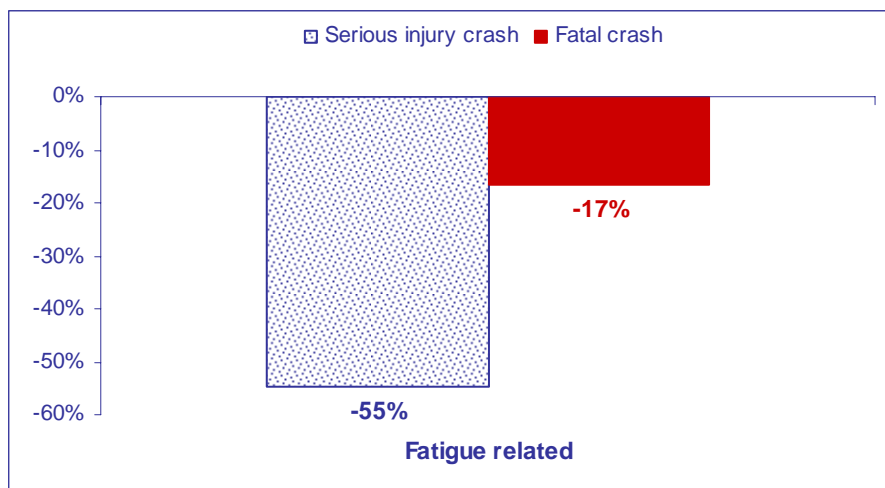
Alcohol, Speed, Fatigue, Seatbelts and Pedestrians

4-3: Fatigue related serious injury/fatal crashes

Serious injury crashes

Fatigue	2005	Average 2000-2004	% Total
Non-fatigue related	77	87.0	97.5%
Fatigue related	2	4.4	2.5%
Total	79	91.4	100.0%

Fatigue related crashes - trend 2005



Percentage change between 2005 and corresponding five-year average

Fatal crashes

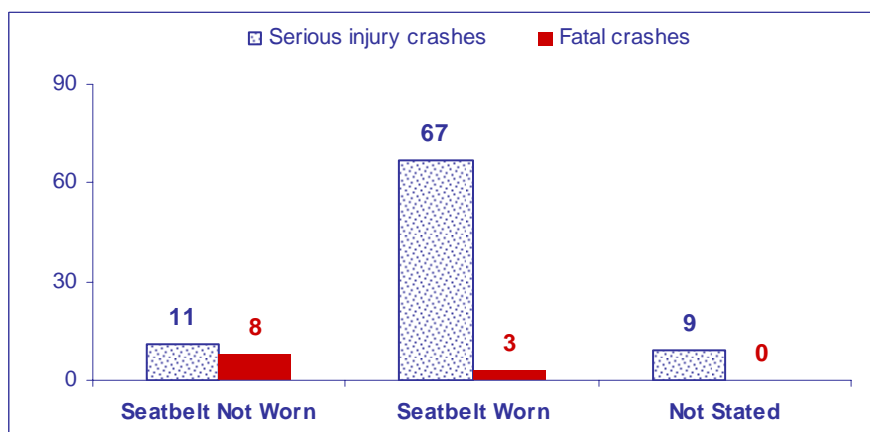
Fatigue	2005	Average 2000-2004	% Total
Non-fatigue related	19	9.8	95.0%
Fatigue related	1	1.2	5.0%
Total	20	11.0	100.0%

4-4: Seatbelt related serious injuries/fatalities

Serious injuries

Seatbelt	2005	Average 2000-2004	% Total
Seatbelt Worn	67	68.4	77.0%
Not Stated	9	18.8	10.3%
Seatbelt Not Worn	11	13.0	12.6%
Not Applicable	0	0.4	0.0%
Total	87	100.6	100.0%

Seatbelt related serious injuries/fatalities



Road trauma data for third quarter 2005

NT main causes of road trauma: July-Sep 2005

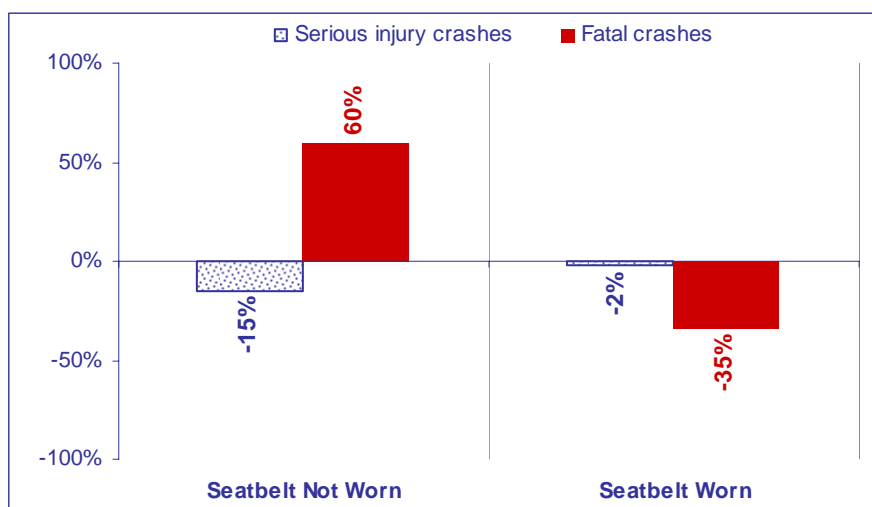
Alcohol, Speed, Fatigue, Seatbelts and Pedestrians

4-4: Seatbelt related serious injuries/fatalities

Fatalities

Seatbelt	2005	Average 2000-2004	% Total
Seatbelt Not Worn	8	5.0	72.7%
Seatbelt Worn	3	4.6	27.3%
Not Stated	0	1.4	0.0%
Total	11	11.0	100.0%

Seatbelt related serious injuries/fatalities - trend 2005



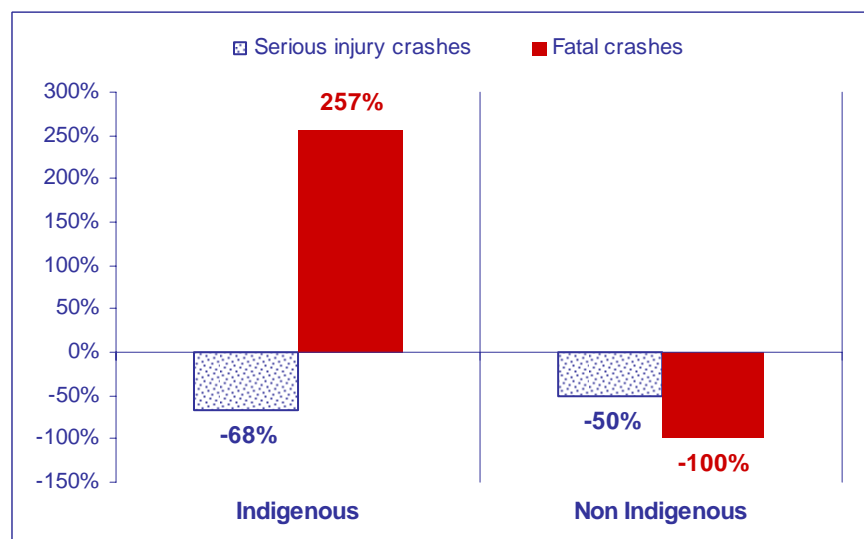
Percentage change between 2005 and corresponding five-year average

4-5: Pedestrian related serious injuries/fatalities

Serious injuries

Pedestrians	2005	Average 2000-2004	% Total
Indigenous	2	6.2	50.0%
Non Indigenous	2	4.0	50.0%
Total	4	10.2	100.0%

Pedestrian related serious injuries/fatalities - trend 2005



Percentage change between 2005 and corresponding five-year average

Fatalities

Pedestrians	2005	Average 2000-2004	% Total
Indigenous	5	1.4	100.0%
Non Indigenous	0	0.8	0.0%
Total	5	2.2	100.0%